

AccuFACE[®] EFR-T3 Series

Quick Installation Guide (External Preview Version)

A. Preparation

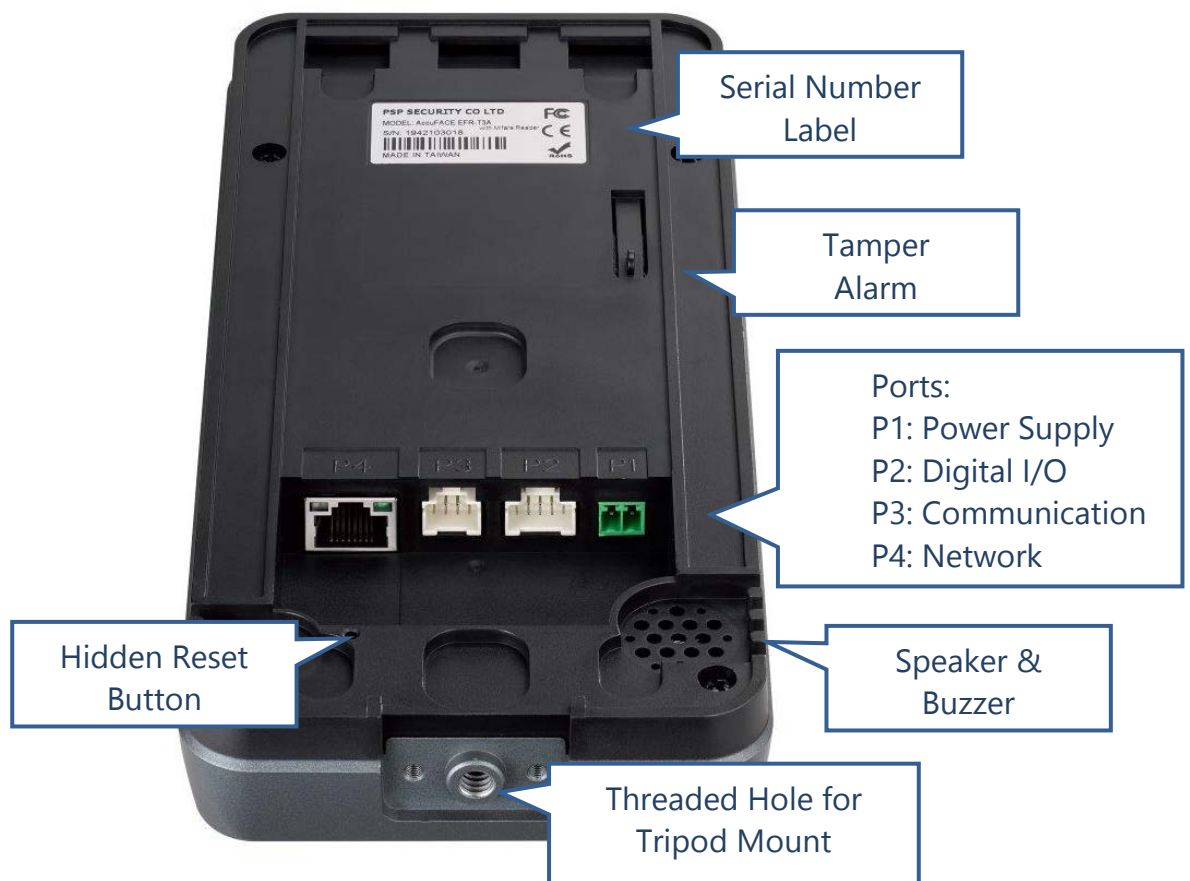
The following peripherals are required for installing AccuFACE:

- Mounting bracket
- 12 VDC power supply with at least 1.5 Amps output
- Standard Ethernet cable
- Screws 4~6x
- Special screws 2x

B. Wiring

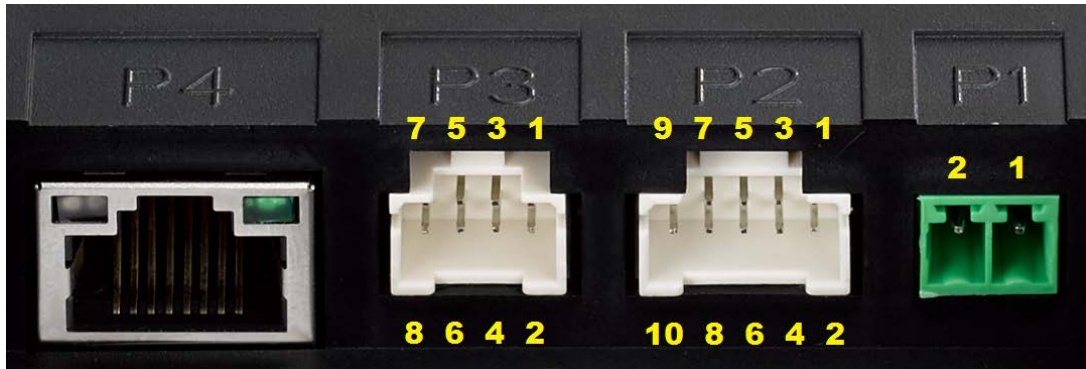
1. Back Panel

Below describes the functionalities of back panel at the back of the AccuFACE.



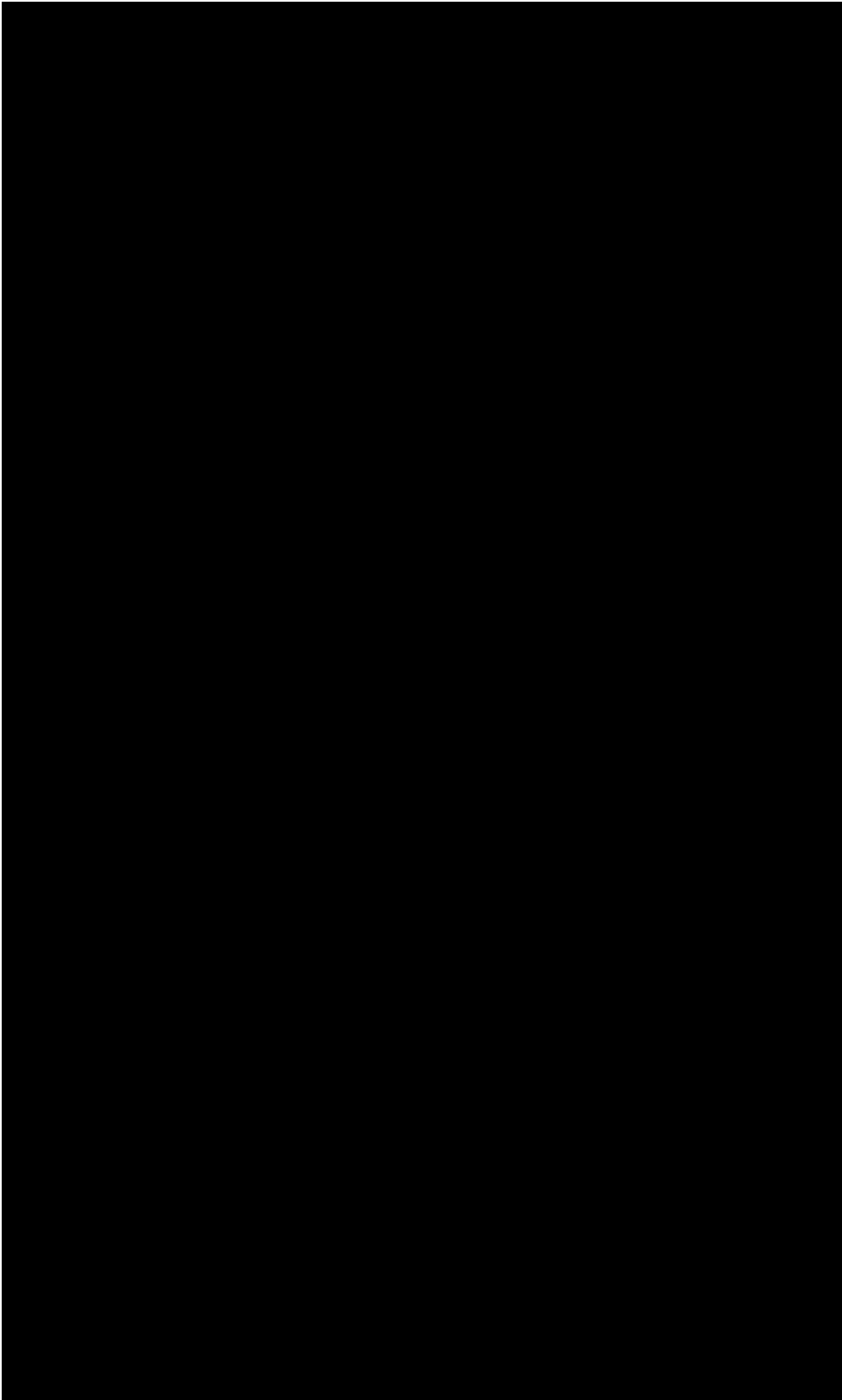
2. Port Pins

The AccuFACE has four ports located at the back of the unit, for power supply, digital I/O, communication, and network interface.



Black
Pink
Purple
White
Gray
Green
Yellow
Blue
Orange
Red
Black

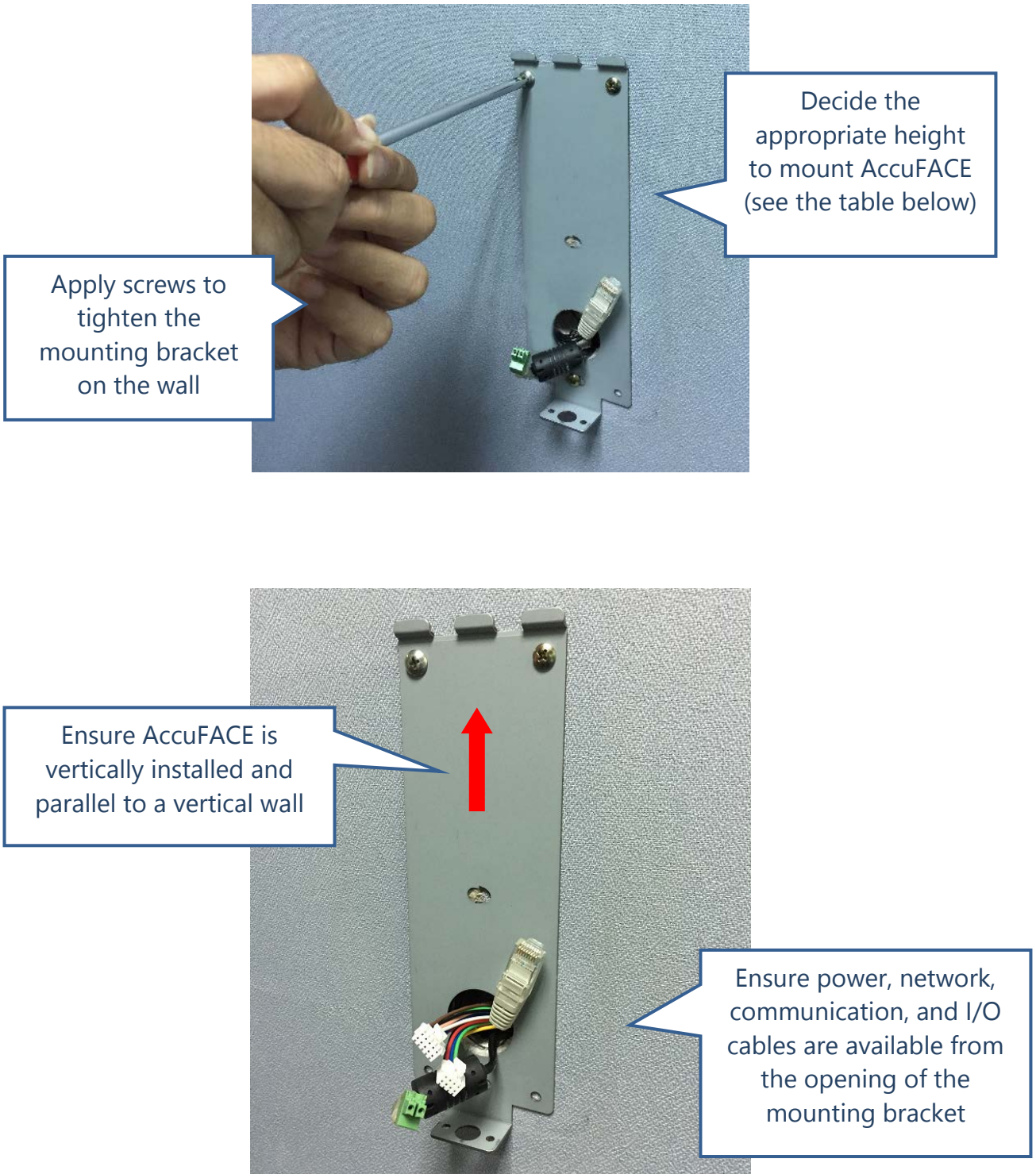
3. Typical Wiring Schematics



C. Installation

1. Installing

Follow below steps to install AccuFACE:

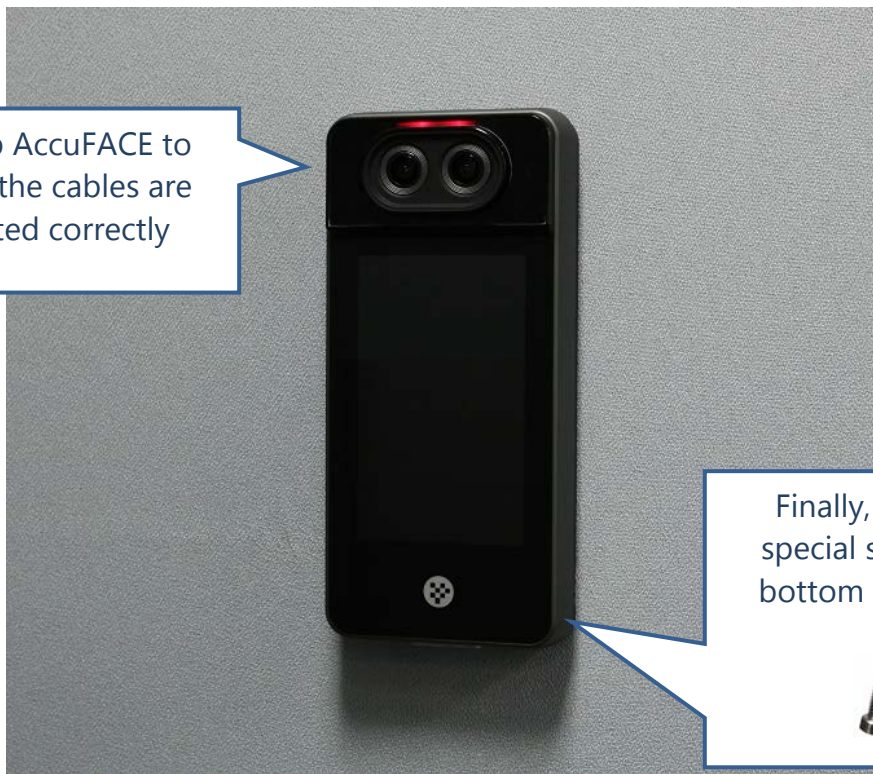


Connect all the cables to the ports, and mount AccuFACE gently



Hook the top of the bracket and press it down. Slide the unit down to reach the bottom of the bracket

Power up AccuFACE to test if all the cables are connected correctly



Finally, mount two special screws at the bottom of AccuFACE

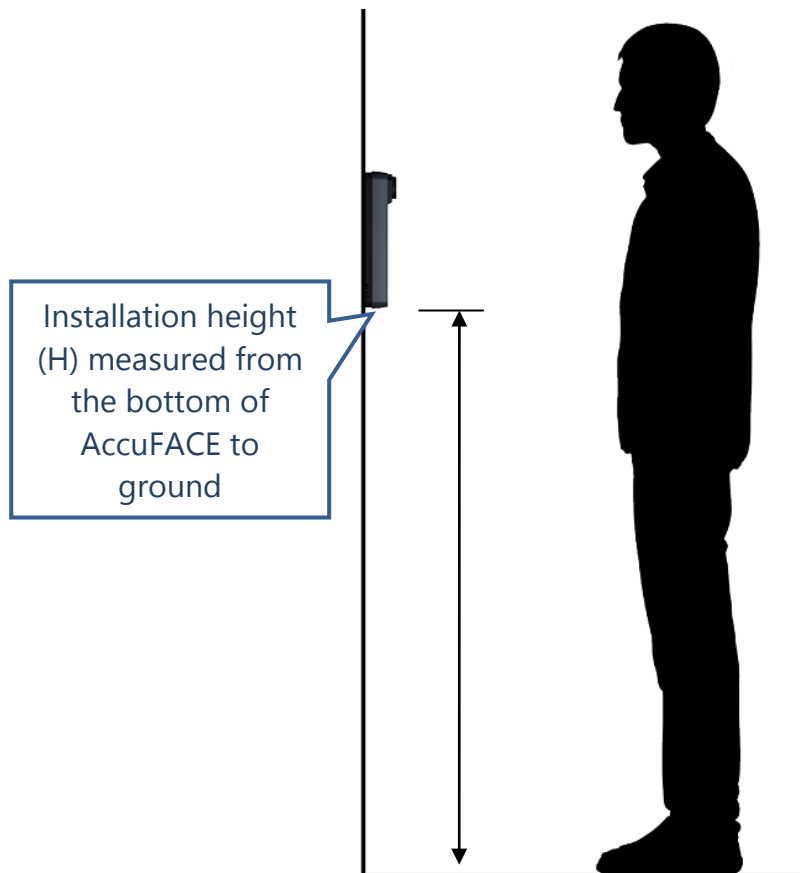


2. Installation Height Consideration

More about installation height:

- For installation with multiple AccuFACE, all units (including unit used for user enrollment) must be installed at the same height
- Installation height depends on end user's minimum and average height
- See below table to find the appropriate installation height

Installation height of AccuFACE (H)	Minimum user height	Maximum user height
1.05 m	1.30 m	1.70 m
1.10 m	1.35 m	1.75 m
1.15 m	1.40 m	1.80 m
1.20 m	1.45 m	1.85 m
1.25 m	1.50 m	1.90 m
1.30 m	1.55 m	1.95 m



D. More